



MONTHLY MEMBERSHIP PROGRESS REPORT

District 3 K

Results as of: 2/28/2014

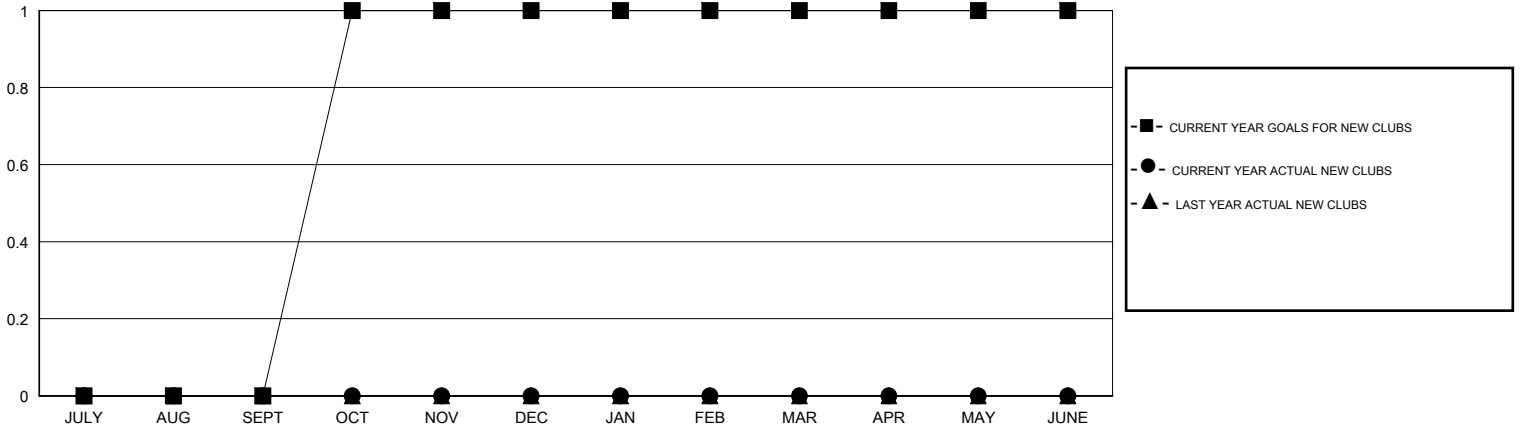
GMT: HAL GRIFFIN

LOCATION OKLAHOMA

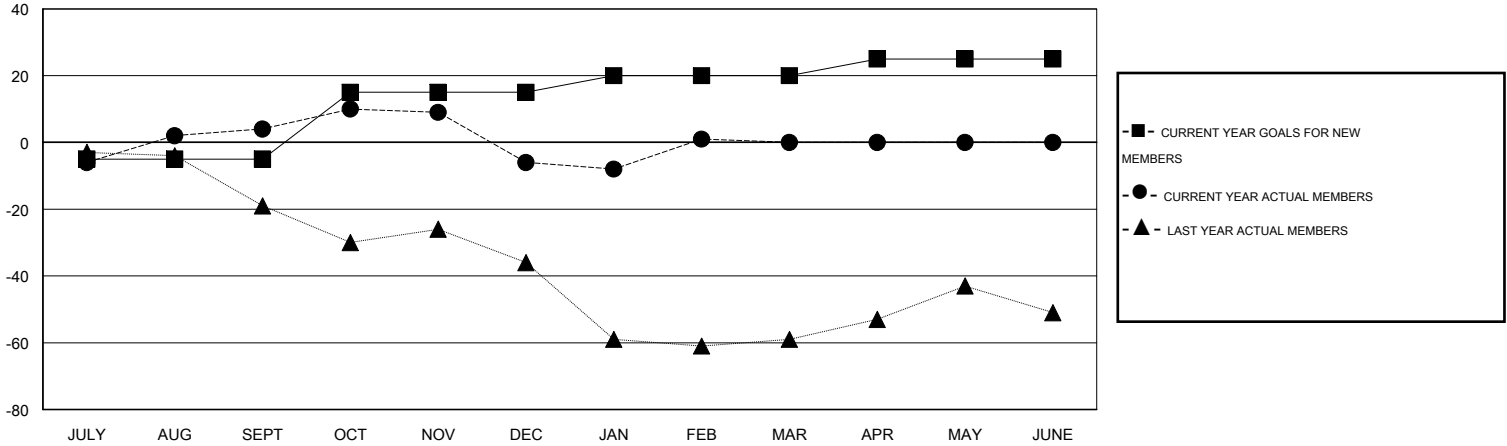
GMT CA 1

Clubs					Members				
RESULTS FOR 2013-2014					RESULTS FOR 2013-2014				
QUARTER	NEW CLUB GOAL	ACTUAL NEW CLUBS	ACTUAL DROPPED CLUBS	ACTUAL NET GAIN/LOSS	QUARTER	NEW MEMBER GOAL	ACTUAL TOTAL MEMBERS ADDED	ACTUAL DROPPED MEMBERS	ACTUAL NET GAIN/LOSS
JULY/AUG/SEPT	0	0	0	0	JULY/AUG/SEPT	-5	30	26	4
OCT/NOV/DEC	1	0	0	0	OCT/NOV/DEC	20	29	39	-10
JAN/FEB/MAR	0	0	0	0	JAN/FEB/MAR	5	27	20	7
APR/MAY/JUNE	0	0	0	0	APR/MAY/JUNE	5	0	0	0

GOALS AND ACTUAL NEW CLUBS CUMULATIVE



GOALS AND ACTUAL MEMBERS CUMULATIVE



DROPPED CLUBS: 0	26 CLUBS OF 36 ADDED 1 OR MORE NEW MEMBERS	GENDER DISTRIBUTION MALE 666 (71.00%) FEMALE 272 (29.00%)
DROPPED MEMBERS DECEASED 5 CLUB CANCELLED 0 OTHER 80 TOTAL 85	CLICK HERE FOR HEALTH ASSESSMENT DATA	FAMILY UNIT MEMBERS 82 HEAD OF HOUSEHOLD 41 NON-HEAD OF HOUSEHOLD 41